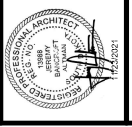


Architecture Incorporated
 415 South Main Avenue
 Suite 100
 Spring Hill, South Dakota 57103
 Phone: (605) 339-5211

145 S. South Street, Suite 201
 P.O. Box 804
 Rapid City, South Dakota 57701
 Phone: (605) 342-1125

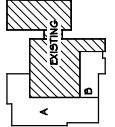
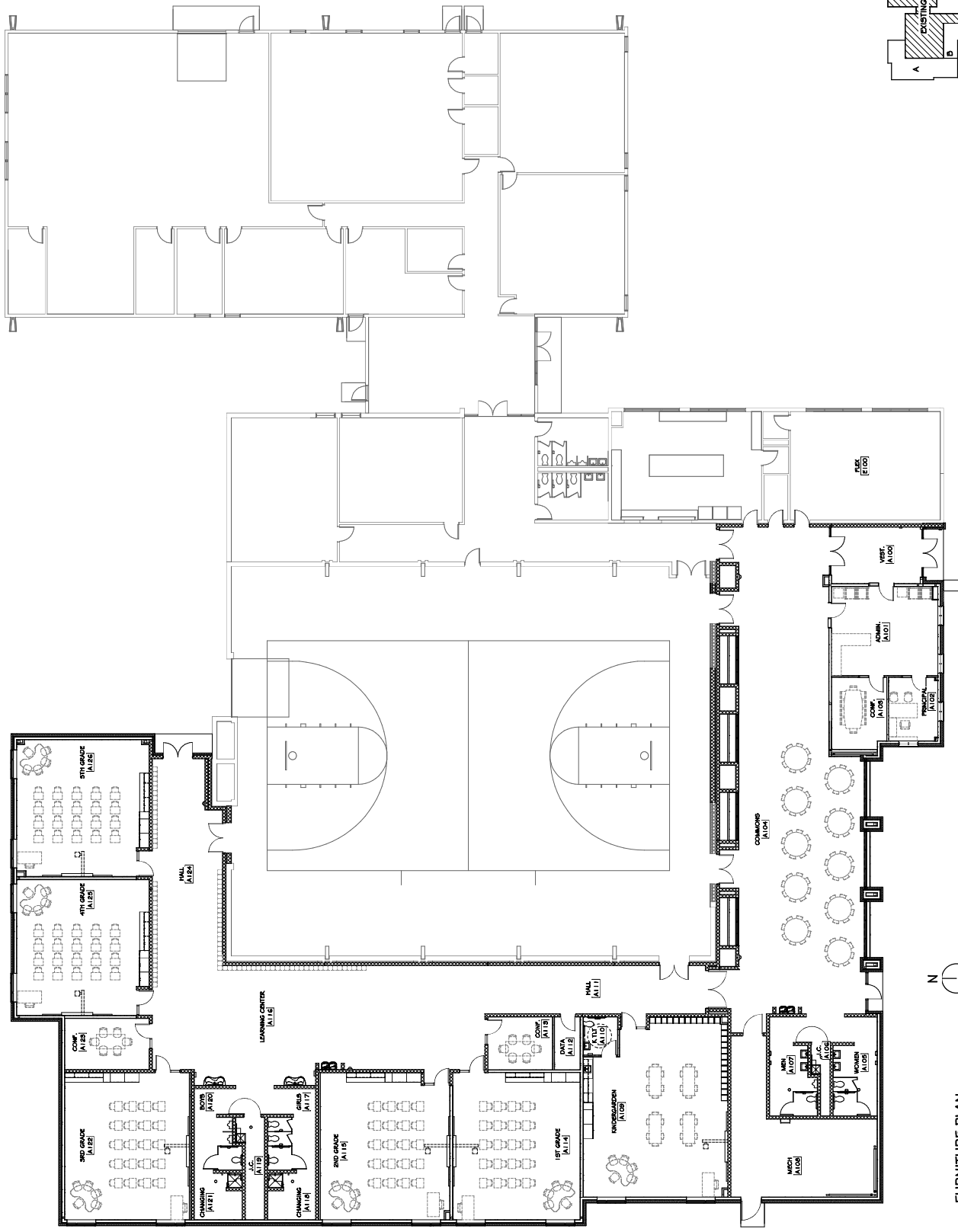


CORSICA-STICKNEY ELEM. SCHOOL ADDITION
 FURNITURE PLAN

DATE	11/15/2021
BY	JK
PROJECT	CORSICA-STICKNEY ELEM. SCHOOL ADDITION
OWNER	STICKNEY SCHOOL DISTRICT
ADDRESS	145 S. SOUTH STREET, SUITE 201, RAPID CITY, SD 57701
PHONE	(605) 342-1125
FAX	(605) 342-1125
EMAIL	ARCH@CORSA-ARCH.COM

4.60

GENERAL NOTES - FURNITURE PLAN
 A. FURNITURE SHOWN IS FOR REFERENCE ONLY.



KEYPLAN

FURNITURE PLAN
 1/4" = 1'-0" SCALE