

Modern School Building Since 1931

Stickney has had a modern school building since 1931, but it was not always so.

First classes were held in the building at the site where the present Community Building is located. In July of 1906, a meeting was held in Mooney's Hardware to plan a "modern school." The school was built by December 1907 and classes were held in the meantime in the building between the present Wolbrink's Store and the building east of Stickney Hardware. This building was later moved into the country and still later, brought back by Fred Koop, and remodeled into a house (where Melvin McBrayers now live).

Furniture was moved into the new school during Christmas vacation of 1907, so that the schoolhouse would be "in readiness for commencement after the holidays," according to the Postal Card of December 20, 1907.

The first election was held in June 1906 for Stickney Independent school district and the following Board of Education was elected: William Sigloh, W. C. Stilwell and Clark M. Hockett. J. E. Bachmore was elected school treasurer.

The school building was remodeled in 1915, and a vestibule was built over the front entrance.

There were eight grades taught in the first school, but by 1922, a full 12-grade course was offered, according to The Argus in its issue of August 24, 1922. At that time, the Board also purchased a country school building for the primary grades. Teachers hired by that date were Miss Jessie Linklater, Marie Nelson, Irene Hazen, Leona Calhoun; Mr. Sims and Mr. Bergquist (high school).

On July 3, 1931, there was a fire in this frame schoolhouse and the basement and first floor were badly damaged. Consequently D. W. Sprick bought one schoolhouse for \$261 on behalf of the Odd Fellow Lodge. They made it into a hall, which served for many years and was finally bought in 1979 by Hugh Scarborough, who remodeled it and made it into the South Side Apartments. The small building was purchased by Mildred Earl.

Bonds were voted to finance a new brick building in 1931, and on September 10, there was a "housewarming." Major O. W. Coursey of Mitchell delivered the address. The building cost \$38,312. It was 90 by 114 feet with a basement housing a kitchen, dining hall, store room, furnace and latest plumbing and heating equipment. The auditorium was 38 by 72 feet, the stage, 19 by 30 feet. The first floor housed four grade rooms and lavatories. The second floor had the assembly, four recitation rooms, library and superintendent's office.

First faculty of the new building: Supt. C. S. Olsbo, Coach Walter Sattler, Luvern Thomas, Elta Fisher, Esther Davis, and Jessie Linklater.

There was a period of school reorganization in

the latter part of the 1960's; rural schools became part of 12-year school districts. By 1969, all of Aurora County was in 12-year school districts, Stickney, White Lake and Plankinton.

Aurora Common School District combined with Stickney Independent School District in August of 1966. Part of the school district east of Stickney was added in 1977. Dudley Township voted in the summer of 1970 to close Hughes School and to send elementary pupils to Stickney.

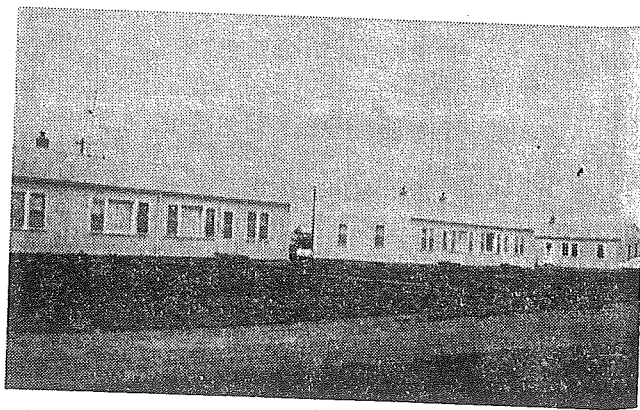
In 1962, Stickney built a two-part cement block addition to the school, with its own plumbing and heating system.

In 1967, a \$140,000 bond issue for construction of additional school facilities was voted on and passed. This was completed in 1968. There was an open house on November 23 for persons to see the new auditorium, with optimum playing floor of 50 by 84 feet, and bleachers to seat 1150 persons, a kitchen, a home economics room, and some classrooms, remodeled from the old gymnasium. School board members at this time were: H. P. Howard, Jr., Marvin F. Bormann, Sinnia Billups, Gerrit Wolbrink and Bernard Hargreaves. Larry Kniffen was superintendent of schools. Former school board members assisting with the building program included Vernon Punt, Cornie Van Genderen, John Swent, C. V. O'Brien as well as former Supt. W. E. Brugger.

The 1967-68 building project cost \$225,000 of which \$140,000 was paid as a bond issue and the debt was liquidated in June 1979, 12 years before the date required. The school was then debt-free.

In 1969, it was decided to purchase some buildings from Pickstown to be used for housing for teachers. Supt. Larry Kniffen and family occupied the first one that was moved. Two other two-family units were brought in.

Another school addition was built in 1974, providing space for a lunch room, dining area, busi-



Three School Housing Units Located Northeast of School

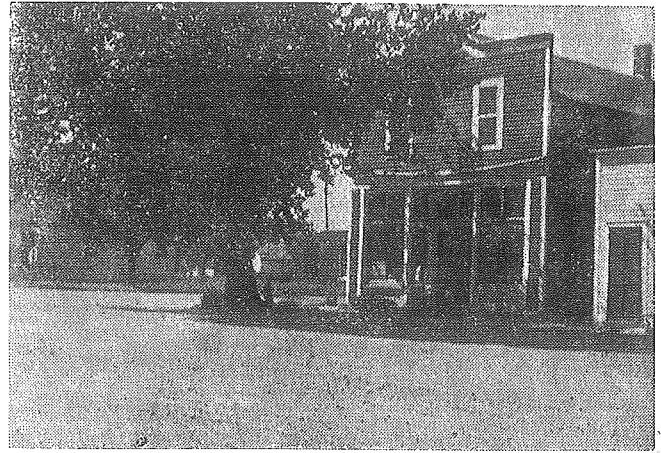


7
 same
 all of
 icts,
 with
 gust
 tick-
 voted
 and
 ment
 umb-
 nction
 and
 e was
 to see
 floor
) per-
 and
 gym-
 were:
 Sinna
 ceaves.
 schools.
 th the
 Cornie
 as well

000 of
 nd the
 ars be-
 a debt-
 e build-
 ing for
 y occu-
 er two-

74, pro-
 a, busi-

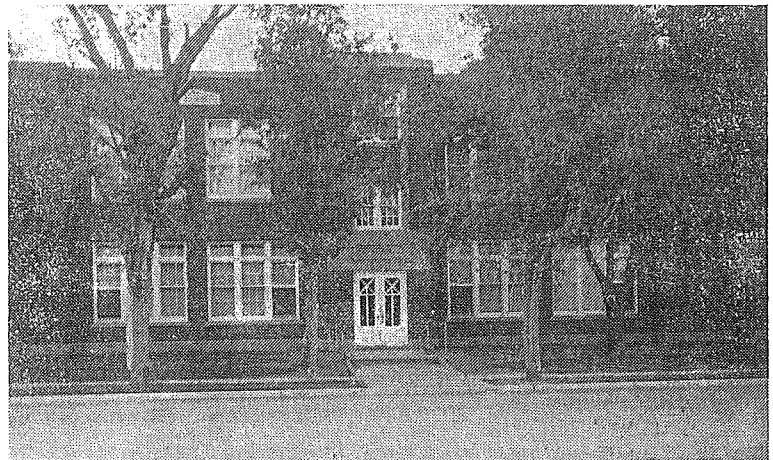
of School



Early School Classes Were Held in This Building, Located Where Present Community Building Now Stands.



Schoolhouse, Built in 1907



Schoolhouse, Built in 1931

New Addition, Stickney School

September 26, 1975

Company		Cost	Total
Schmucker, Paul, Nohr & Associates, Mitchell, SD	Architect	10,166.40	
Haag Construction, Parkston, SD	General contractor	74,552.50	
Bak's Electric Irene, SD	Electrical	17,541.00	
Swanson's Mitchell, SD	Mechanical	32,905.00	135,164.90
<hr/>			
Western Mfg. Co.	Power washer	231.72	
Triangle School Service	Lockers	260.75	
Bak's Electric	Mercury lite, bells	496.33	
Stickney Lumber	Insulation, tile, etc.	1,595.52	
J. S. Latta	Desks	518.00	
Stickney Hardware	Paint, stain, etc.	889.39	
Students	Labor	184.87	
Vernon Jacobs,	Labor, band room, kitchen	452.00	4,628.58
<hr/>			
Home Ec			
Stickney Lumber	Cabinets, ranges, refrig.	3,380.00	
Nowak Plbg. & Htg.	Sinks & labor	731.96	
Brower's	Sewing machines	648.00	
Mitchell Sewing Center	Sewing machines	732.00	
Stickney Hardware	Dishes, siver, etc.	625.20	6,117.16
			145,910.64
Orlin Shefner Wessington Springs, SD	Gravel, parking lot		229.68