

COMMERCIAL ROOM

Welcome
 TO
OPEN HOUSE
 AT
STICKNEY
PUBLIC SCHOOLS

Board Members

H. P. Howard, Jr., President
 Marvin Bormann, Vice Pres.
 Sinnia Billups
 Gerrit Wolbrink
 Bernard Hargreaves

Former Members

on Building Program

Vernon Punt
 Cornie Van Genderen
 John Swent
 C. V. O'Brien
 Former Supt. Brugger

Commercial Club Officers

Donald J. Scales, President
 Roger Anderson, Sec.-Treas.

Pancake Committee

Willard Rogers
 Gerrit Wolbrink
 Lowell Smith
 Ronald Roberts

P.T.C. Officers

Clarence Hemeyer, President
 Mrs. Harold Pecenka, Secretary
 Mrs. Willard Rogers, Treasurer

Student Council Representatives

Seniors: Norma Matzner
 Juniors: Steve Messer
 Sophomores: Leslie Crago
 Freshmen: Rita Kaus
 Pep Club: Milce Swent
 Band: Barry Moller
 S Club: Allen Scarborough

Student Council Officers

President: Leon Kuyper
 Vice Pres.: Mary Lou Punt
 Sec.-Treas.: Donna Titze

Class Presidents

Seniors: Linda Roth
 Juniors: Don Bryan
 Sophomores: Chris Miller
 Freshmen: Dale Bryan

FREE
PANCAKE SUPPER
 Sponsored By
Stickney Community
Club

3:00 P. M. - 8:00 P. M.

Saturday, November 23, 1968

Additions and Expansions of the Stickney Public Schools

SCIENCE ROOM. This room has the latest equipment of any science room in southeastern South Dakota. It is a combination classroom and laboratory. There is classroom for 30 and laboratory room for 16. This room features forced air ventilation, exhaust hood, and a separate room for chemical storage. The old Science Room has been converted into the math room.

STUDY HALL. A new 1522 square foot Study Hall provides ample space for students to study. This room has forced air ventilation. The old Study Hall is now the English room. The old English room has been converted into the Library, to provide ample space for shelving of books and for study. The old Library has been converted into a workroom for the faculty.

SUPERINTENDENT'S OFFICE. The new office has the facilities and the room to carry on the administration of the school. The old office is now being used by the business manager.

SHOP. The new shop area is greatly enlarged from the previous area. New tools and equipment have been added. Hand tools are the most numerous, however, power tools such as a 12-inch radial arm saw, 10-inch table saw, 12-inch band saw, and a 12-inch variable speed turning lathe have been added. With this expansion, more students are able to participate in shop and learn the skills of woodworking.

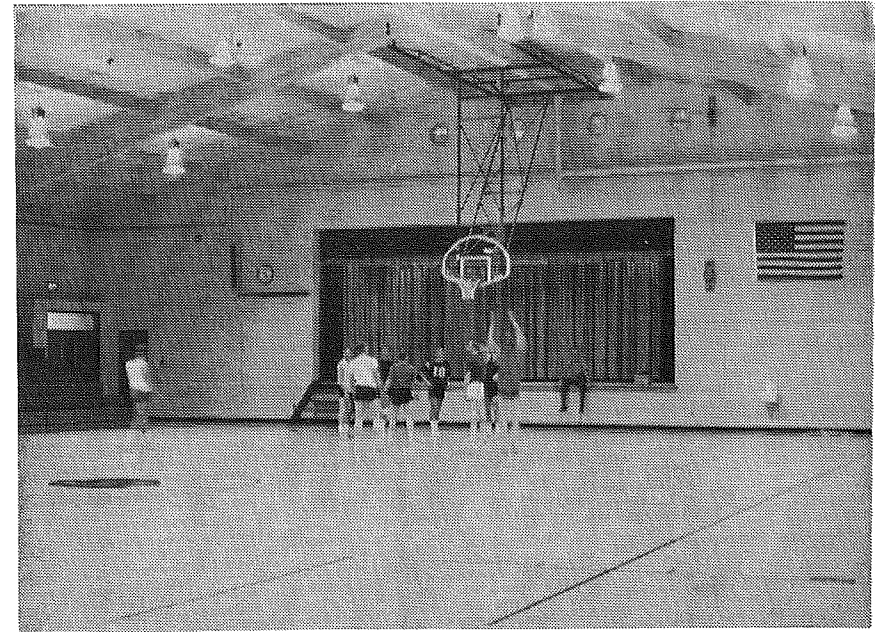
DEVELOPMENTAL READING ROOM. This new room provides ample space for small reading classes in the afternoon. Kindergarten is held here in the morning. This is the first year this program has operated for a full year. This program is Federally funded.

COMMERCIAL ROOM. The spacious Commercial Room has 20 typewriters. It has greatly improved lighting and also has posture chairs which facilitates optimum typing.

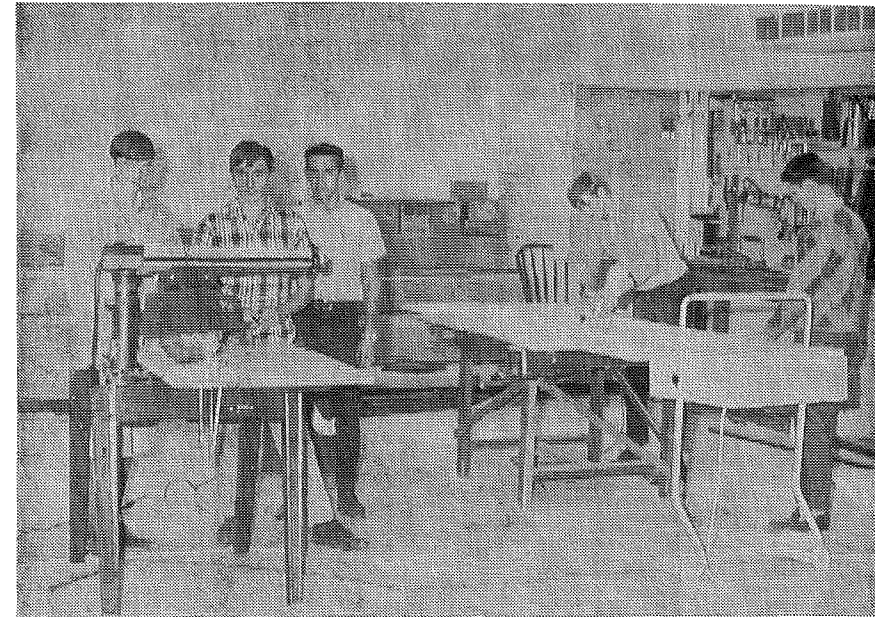
KITCHEN. This room was remodeled to make one of the finest school kitchens in the area. It is designed to meet the specifications of the State School Lunch Department. There are approximately 200 students served daily. The area the old kitchen occupied is now two locker rooms and a coach's office.

BAND ROOM. The spacious 32 x 48 band room provides space for the Band and also for the Chorus. There is ample room FOR ALL instrumental situations, and the room can also be used very well for Chorus.

(Continued on Page 6)



AUDITORIUM



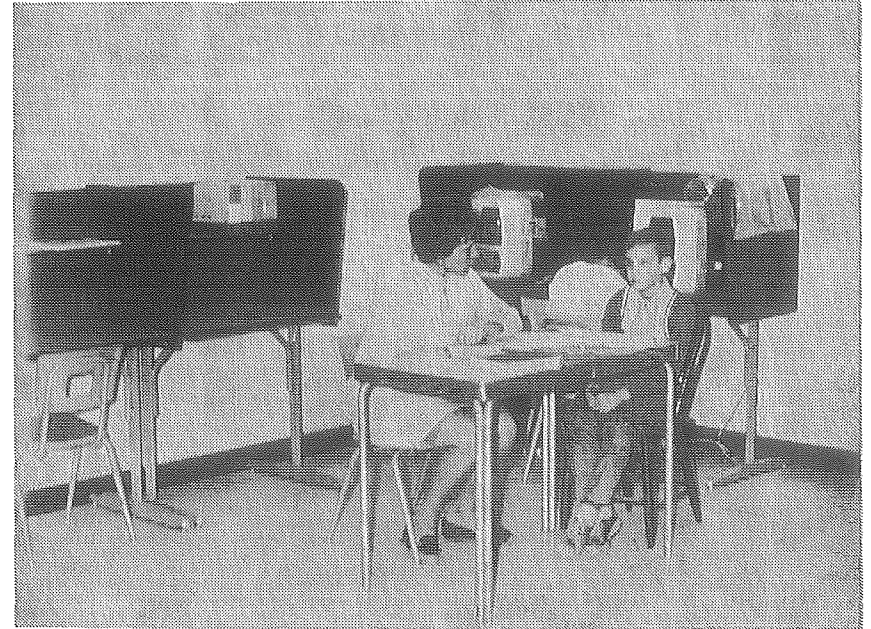
INDUSTRIAL ARTS

AUDITORIUM. The auditorium displays an optimum playing floor of 50' x 84'. It has vinyl on steel bleachers that will seat 1150 persons. The superstructure is laminated wood. The CBH Conference Tournament will be held in this gym on January 8-9-10 and 11, 1969. The flag in the auditorium was donated by the Stickney American Legion. The clock was donated by the Two-Four Club.

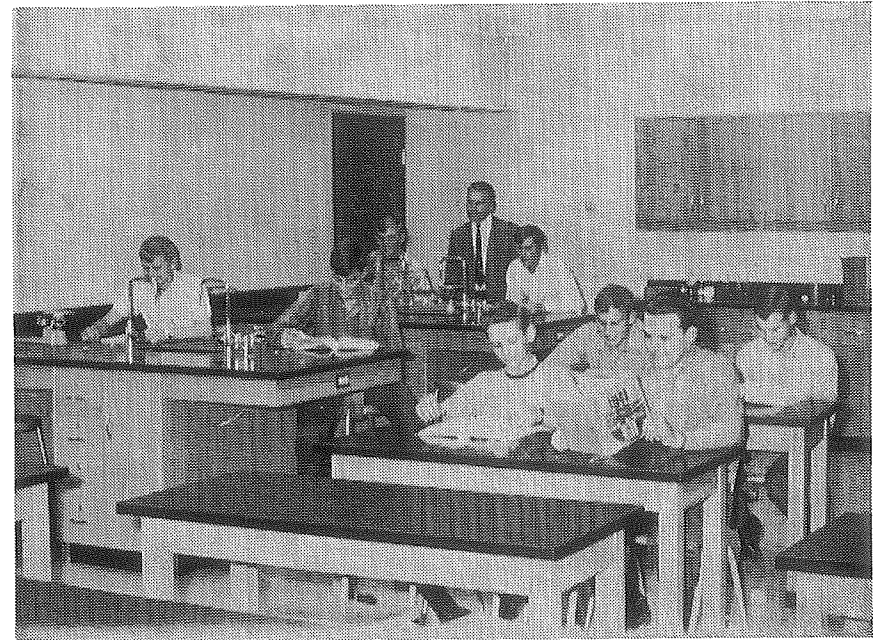
STAGE. The stage exemplifies the versatility of the auditorium. The P.T.C. and the Jolly Jills donated the curtains for the stage and the P.T.C. donated the lighting for it.

Stickney Independent School District No. 21

Superintendent	Larry Kniffen
Principal, English and Basketball	Dan Moran
Music	Duane Moke
Science and Drivers Education	Don Zingler
Social Science and Football	Richard Wilson
Commercial, Annual and Newspaper	Betty Foos
Math and Grade Basketball	Dennis Pierson
7th and 8th Grade	Mrs. Robert Billars
6th and 7th Grade	Mrs. Walt Wittig
4th and 5th Grade	Mrs. Hugh Scarborough
2nd and 3rd Grade	Mrs. Lloyd Klein
1st and 2nd Grade	Mrs. Wm. Barrows
Kindergarten and Developmental Reading	Mrs. Richard Wilson
Teachers' Aid	Mrs. Wally Unruh
Sup't of Buildings and Grounds	Mr. Wm. Moke
Assistant	Mrs. Wm. Moke
Food Service, Head Cook	Mrs. Fred Koop
Assistant	Mrs. Luverne Greenwell
Bus Drivers, Bus No. 1	Jerome Beuhler
Bus No. 2	Lawrence Peters

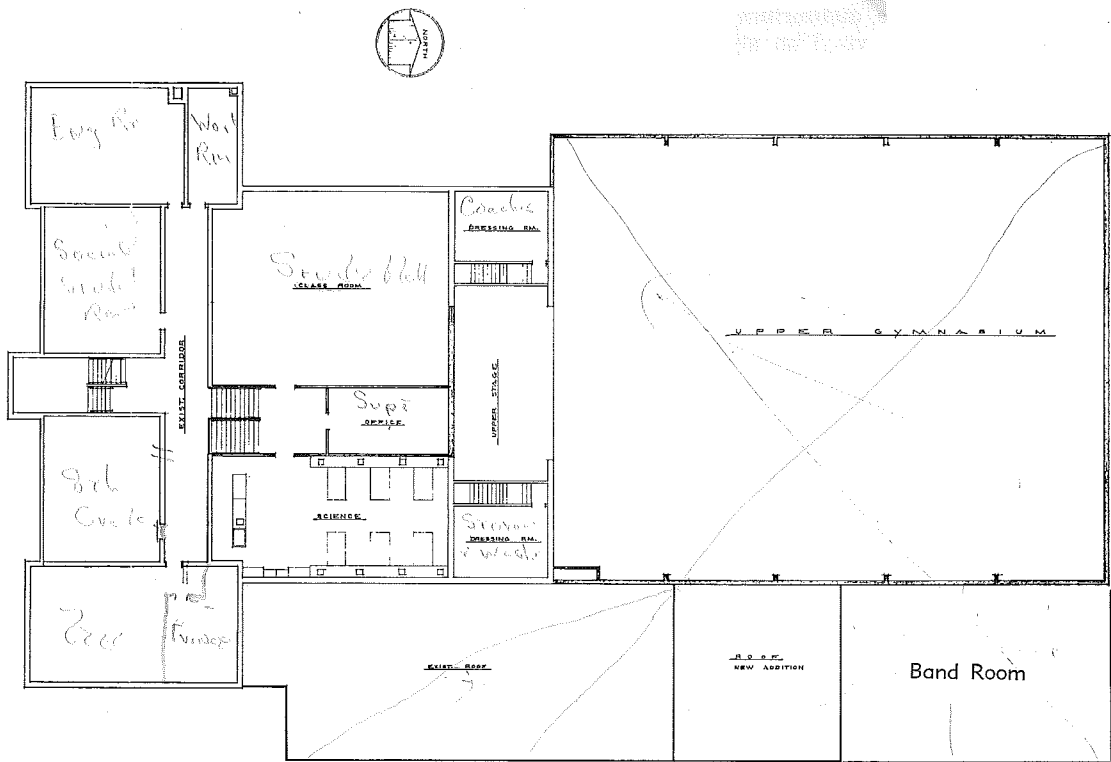


KINDERGARTEN AND DEVELOPMENTAL READING

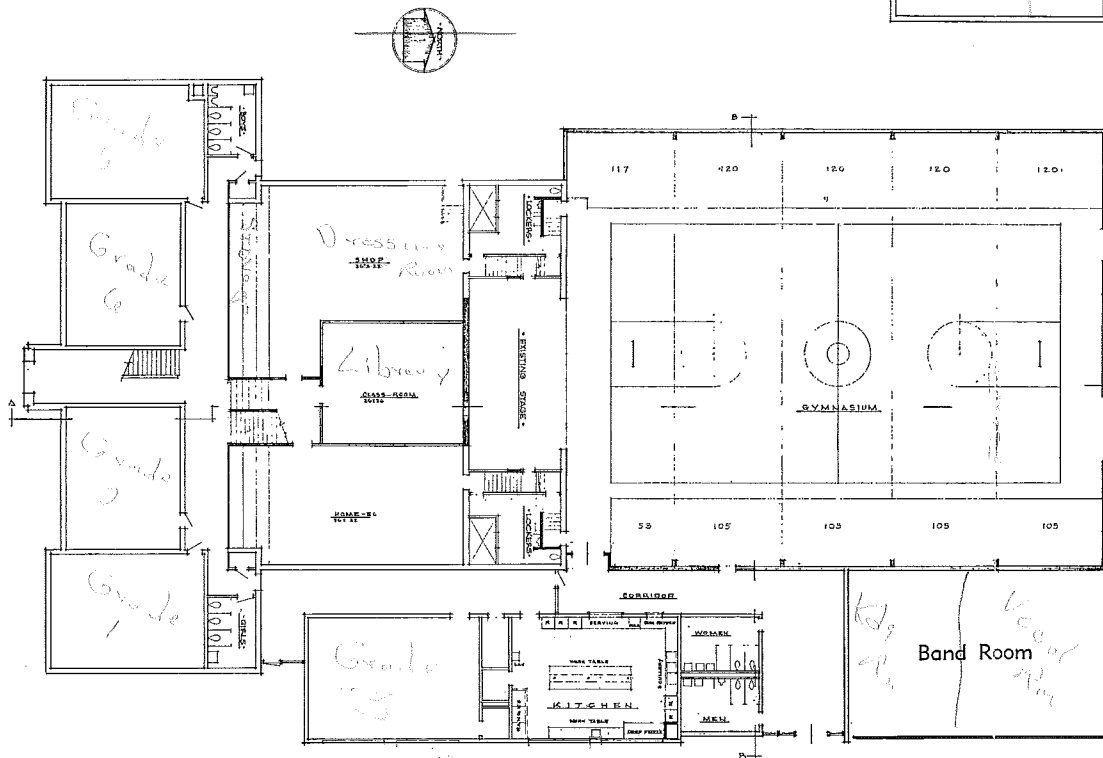


SCIENCE ROOM

THE FORMER BUILDING HAD APPROXIMATELY 7,140 SQUARE FEET OF SPACE. THE NEW ADDITION AND REMODELING ADDS 19,978 SQUARE FEET (AT A COST OF \$10.01 PER SQUARE FOOT)



Lower Floor



Upper Floor